

# Japan America Society of Minnesota



## 通 信

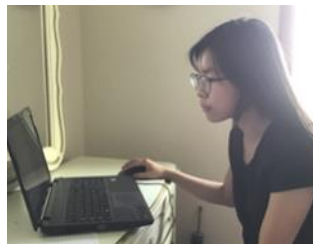
*The Tsūshin is a membership publication of the Japan America Society of Minnesota*

June 2020 Vol. 29, No. 6

### Recap: 2020 Japan Bowl



National Japan Bowl 2020 was held online for the first time on Friday, May 29 as *Digital Japan Bowl*. It was a big success! This year, J-Quiz winners participated in this nationwide championship for high school students from their homes due to current health concerns caused by COVID-19. Although they



*Sydney Chen, Level III  
Eastview High School*

Unfortunately had to give up their trip to Washington D.C., they had a great time competing with other students from all over the U.S. They enjoyed the online cultural sessions as well. JASM would like to thank the National Japan Bowl team for all their hard work preparing and organizing for this memorable event for high school students again this year.

Before the event there were two technical tests for the teachers and the students. Also different from previous years: everyone could watch the finals live on YouTube. It was fun and surprising to see how difficult the questions were and how quickly and correctly many students answered. We were very happy to hear that after participating in the National Japan Bowl, our J-Quiz winners are now even more motivated to continue learning Japanese.

We would like to thank each one of the sponsors that made this year's National Japan Bowl participation possible. Last year, we lost one of our beloved friends and supporters, Ken Port. He was a wonderful educator who worked tirelessly for the students and we truly miss him. The Ken Port Scholarship will support Japan Bowl trip costs for Level 4 team winners. We also would like to thank Paula Port for her support for building the Ken Port Scholarship and for allowing us to continue Ken's legacy through her own support for J-Quiz.



*Ken Port*

... continues on page 4

### Mondale Award Nominations



*Ambassador Mondale with 2019  
Mondale Award recipient  
Patricia Katagiri*

In 1997, the Japan America Society of Minnesota created the Mondale Award for Japan-Minnesota Partnership to recognize outstanding contributions to the building of understanding, cooperation, and respect between the people of Japan and Minnesota.

The award was named for — and first presented to — Joan and Walter Mondale to recognize

Mrs. Mondale's decades-long effort to promote the arts in both countries, and Ambassador Mondale's service as United States Ambassador to Japan. JASM hopes to continue the distribution of this esteemed award this year.

If you know someone who has dedicated their efforts to the continued benefit of the U.S.-Japan relationship, please nominate them! All applications must be submitted either by email to [jasm@us-japan.org](mailto:jasm@us-japan.org) or filling out the form [here](#) by Monday, August 12.

### Donation Option: Employee Match



What is Employee Match? Employee Match occurs when a company matches the donations of their employees who donate to eligible non-profits like JASM. This could be monetary donations, or if the employee volunteered, the company might give money to the nonprofit to acknowledge the employee's volunteer time. Some companies do not offer this program and even if they do, each company has different policies on what they will match and how. Please consult your employer to see what their policies are. If there is anything that JASM needs to do to qualify for Employee Match at your company (i.e., filling out any forms or signing up), please let us know by calling (612)627-9357 or emailing us at [jasm@us-japan.org](mailto:jasm@us-japan.org), and we will be sure to take the necessary steps to make this possible. Thank you for considering this donation option and for all of your contributions to JASM. It is thanks to you that we are able to further the relationship between Minnesota and Japan.

## Message from Executive Director Rio Saito

Hello, members of Japan America Society of Minnesota. It has been an exceedingly difficult time for everybody, and I hope everyone is safe and healthy. Although we are in this incredibly unique and difficult situation, we are finding new ways to connect with each other. My 7-year-old nephew who lives in Hanoi, Vietnam has not been in school for about four months now. Because of the stay-at-home situation he decided that he wanted to learn English with me, so now I talk to my nephew daily to study English. I look forward to our one-hour conversation every day.

Because we are all physically apart from each other, now more than ever we have the desire to connect with each other. JASM has been working extremely hard trying to build and strengthen our community! Even though we are in a unique situation right now, *our mission has not changed*. We believe that there are things that we can do to keep each other connected closely despite the situation. And we feel absolutely honored and privileged to be in place to serve you.

So far, we have had an online lecture in Japanese about COVID-19 from a Japanese doctor who resides in Minnesota, as well as a virtual sake tasting with the sake specialist from Stillwater, MN. We are also planning to have hula dance lessons taught by a Japanese hula teacher, and a virtual lecture on an exhibition at the Minneapolis Institute of Art (Mia) by the head of the Mia Japanese and Korean art department. We are extremely grateful for all these specialists who are sharing their knowledge with us, and we're looking forward to more virtual events! These events are for everyone.

For us to continue with our mission and activities, we need your continuing support. Please renew your membership if you have not recently done so. We have a new membership system online that makes the renewing process so much faster and easier. We are truly grateful for your generous donations.



QR cord to the donation site or click:

<https://mn-japan.org/Donate>

We cannot thank you enough for being a part of our organization's fabric over the years. Please know that you always remain in our thoughts. We keep our communication open through our Tsushin/newsletter and SNS such as Facebook, Instagram, and Twitter. As you and your loved ones keep each other safe by being apart, we continue our work, so that you can stay connected through JASM.

Sincerely,  
Rio Saito, JASM Executive Director

*\*This article was written before May 25<sup>th</sup>. JASM is a non-political organization and we usually refrain from making comments on current events, but I must make a small comment. JASM is in the business of connecting cultures and people. I cannot do my work without mentioning the loss of Mr. George Floyd. I send my condolences to his family and friends. I stand in solidarity with the community in the pursuit of justice. And I am proud to be a part of an organization whose mission is to bring people together, not divide. Thank you all, again, for letting me be a part of wonderful and strong community.*  
— Rio Saito

## Upcoming: Curator Talk for Mia Exhibition *Yoshitoshi: Master Draftsman Transformed*

On Wednesday, June 17 at 6 p.m., please join us for a virtual walkthrough of the exhibition *Yoshitoshi: Master Draftsman Transformed*, provided by Dr. Andreas Marks, Mary Griggs Burke Curator and head of the Japanese and Korean art department at the Minneapolis Institute of Art (Mia).

This acclaimed exhibition was reviewed in the Wall Street Journal but since Mia has been closed due to COVID-19 it is inaccessible. Using photographs of the artworks in the installation, Dr. Marks will walk us through the exhibition and introduce some of the highlights. Register [here](#) today!



*Moon: Actor Ichikawa Sanshō as Kezori Kueemon, from the series The Snow, Moon, and Flowers (Setsugekka no uchi), 1890, Published by Akiyama Buemon, Carved by Wada Yūjirō, Woodblock print (nishiki-e); ink and color on paper, The Mary Griggs Burke Endowment Fund established by the Mary Livingston Griggs and Mary Griggs Burke Foundation, gifts of various donors, by exchange, and gift of Edmond Freis in memory of his parents, Rose and Leon Freis 2017.106.239*

Tsukioka Yoshitoshi (1839-1892) is considered the last major artist of classical Japanese woodblock prints, known as ukiyo-e. His career spanned Japan's transformation from feudal backwater to modern nation-state, largely during the Meiji period (1868–1912), when he was the undisputed leader in his field. Mia has installed the exhibition *Yoshitoshi: Master Draftsman Transformed* which highlights how Yoshitoshi worked, his skill as a draftsman, and how he responded to changing tastes between approximately 1860 and 1890. Some of the published prints are shown directly beside his original sketches. This is the first time that Yoshitoshi's unusual and best-known painting — an image of six great generals of the East and West, including George Washington and Napoleon III — has been exhibited anywhere.



Dr. Andreas Marks

Dr. Andreas Marks is head of the Japanese and Korean art department at Mia. From 2008 to 2013 he was the director and chief curator of the Clark Center for Japanese Art and Culture in California. He has a Ph.D. from Leiden University in the Netherlands and a master's degree in East Asian Art History from the University of Bonn, Germany. A specialist in Japanese woodblock prints, he is the author of 15 books. His book *Publishers of Japanese Prints: A Compendium* is the first comprehensive reference work in any language on Japanese print publishers. In 2014 he received an award from the International Ukiyo-e Society in Japan for his research. He has curated exhibitions in a variety of media from pre-modern to contemporary art and visual culture at 25 museums including the Birmingham Museum of Art, Detroit Institute of Arts, Honolulu Museum of Art, San Antonio Museum of Art, and the San Diego Museum of Art. His massive 600+-page book on masterpieces of Japanese woodblock prints was just published this past winter by Taschen.



## Recap: COVID-19: The Basics, Webinar with Mio Uchiyama, MD



Mio Uchiyama, MD

JASM's first webinar took place on Thursday, April 30, 2020. We were offered insights into the current COVID-19 pandemic situation by Mio Uchiyama, M.D. (otolaryngologist). It was presented entirely in Japanese, with an additional English informational brochure.

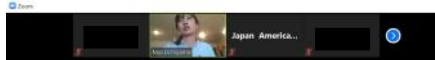
The presentation focused on COVID-19 from the perspective of otolaryngology. There was a basic overview of the virus as well as a look at the symptoms, relevant to the otolaryngology field. It was especially interesting to learn about the mechanism and treatment of olfactory and taste disorder, which are known as primary symptoms of COVID-19. We thank Dr. Uchiyama for giving us the opportunity to learn by attending your online lecture!



### 感染対策を考えようー接触感染対策ー

- 汚染された手で触ったものは接触感染の原因になる
  - 厚紙 24時間
  - スチレンスチール 48時間
  - プラスチック 72~96時間
  - 紙 48時間
  - 布 24時間
- 触れるもの全てにウイルスがいると思って対応する
- 顔周りに手をもっていかない
  - マスクの装着中、外す時にマスクの外側を触らない!
- こまめに手洗い(20秒以上・石鹸使用・アルコール手指消毒・ペーパータオルの使用など)
- 塩素系漂白剤(ハイター、ブリーチ)は有効

Stability of SARS-CoV-2 in different environmental conditions



### 新型コロナウイルス感染症による嗅覚障害の症状の特徴



*Please thank our members with your support!*

### Corporate Benefactor Members

Anime Twin Cities, Inc.  
Daikin Applied  
Delta Air Lines, Inc.  
MTS Systems Corporation  
Sawai Pharmaceutical Co., Ltd.  
Taiyo International

### Patron Members

Dorsey & Whitney LLP

### Corporate Sustaining Members

Arctos Law PLLP  
Deloitte Tax, LLP  
Hamre, Schumann, Mueller & Larson, PC  
Japan Lifeline Co. Ltd.  
Mall of America  
Medtronic, Inc.  
Metropolitan Airports Commission  
MGK, Inc.  
Naigai Industries U.S.A. Inc.  
The Bank of Tokyo-Mitsubishi UFJ, Ltd.

### Corporate Contributing Members

Briggs and Morgan, P.A.  
IACE Travel  
Murata Electronics/Vios Medical Inc.  
Satellite Industries, Inc.  
Surdyk's Liquor & Cheese Shop  
UMEI

### Partners in Service

JK's Table  
Kiku Enterprises, Inc.  
Minnesota Trade Office  
Origami Restaurant  
Sakura Restaurant  
Saint Paul Saints Baseball Club  
Saji-Ya Restaurant  
Suishin Restaurant  
Tomodachi  
Zen Healing Center

### Nonprofit Members

Concordia Language Villages  
Economic Club of Minnesota  
Global Minnesota  
JETAA Minnesota  
JETRO Chicago  
JP Network, St. Cloud State University  
KCC-Japan Education Exchange  
Macalester College Asian Language & Culture Department  
Minneapolis Japanese School  
Minneapolis Institute of Art  
Minnesota Council of Teachers of Japanese  
Minnesota Orchestra  
Mu Performing Arts  
NDSU-Emily Reynolds  
Historic Costume Collection  
Twin Cities Aikido Center  
UMN Department of Asian and Middle Eastern

Studies  
University of North Dakota-Grand Forks  
Winona State University Global Studies Dept.



## Recap: Virtual Sake Tasting with Chris Griese, Sake Story



Chris Griese,  
Sake Story

On May 13, JASM held a virtual sake tasting with Chris Griese from Sake Story. There was an option for participants to take part in the sake tasting if they purchased the three featured sake in advance from our corporate member, Surdyk's. This webinar was for guests 21 years of age or older. It began with a warm greeting by Rio Saito, JASM Executive Director. Chris introduced himself, his business, and described his latest trip to Japan in January, before the COVID pandemic was widespread.

Chris explained the different categories of sake, their characters, and the typical differences between Junmai and Ginjo sake. He also explained what a tokubetsu (special) sake is, when no restrictions apply as for other kinds of sake, and a brewer can be creative to make something special. Chris then introduced each featured sake, its history, the brewery, the people working there, and the beauty of the tokubetsu Junmai.

Participants asked questions after the lecture. Melissa Surdyk from Surdyk's was with us as well, and it was an enjoyable Friday night thanks to all the participants. Thank you for joining us and thank you, Chris for sharing your knowledge and passion of tokubetsu sake!

Participants asked questions after the lecture. Melissa Surdyk from Surdyk's was with us as well, and it was an enjoyable Friday night thanks to all the participants. Thank you for joining us and thank you, Chris for sharing your knowledge and passion of tokubetsu sake!



One of the 'Kanpai' scene at the webinar event

## Mondale Scholarship for Study in Japan



*Alison Meierhofer (right),  
a 2019-2020 Mondale Scholarship  
recipient*

The Japan America Society of Minnesota (JASM) will again award the Mondale Scholarship to select undergraduate students enrolled in Minnesota colleges and universities who are scheduled for a Japan study abroad program and who want to broaden their knowledge of Japan through a combination of study and travel.

Starting in 2019, JASM began inviting students at the University of North Dakota as well as North Dakota State University to apply for this scholarship in addition to Minnesota students. The selection committee has the discretion to award \$2,000 to each scholarship winner. The award can be used for travel to or within Japan or for a special research project in Japan.

**Application materials for the 2020-2021 Mondale Scholarship must be emailed/postmarked to JASM office.**

***Applications will be accepted starting June 8***

***Application deadline: July 8***

***Notification of winner: August 8***

### Application materials:

1. Completed application form (available at [mn-japan.org](http://mn-japan.org))
2. Official college/university transcript(s) from all institutions attended
3. Cumulative GPA 3.0 or higher
4. Two letters of recommendation. These letters should come from a faculty member or a member of the applicant's community of residence who knows the applicant well and who can attest to the applicant's desire to spend time studying and traveling in Japan.
5. An essay that addresses these questions: Why do you want to study and travel in Japan? What is your goal for this experience? How do you intend to use the money from the scholarship? The essay must be no longer than two double-spaced typewritten pages.
6. A copy of the letter of acceptance from the intended program of study in Japan.
7. The study abroad program must be at least one semester long (14-16 weeks).



QR code to JASM Website for  
Mondale Scholarship info  
<https://mn-japan.org/Mondale-Scholarship>

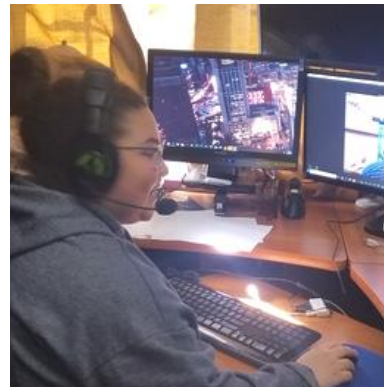


*Mason Williams, a 2018-2019  
Mondale Scholarship recipient*

## Recap: Japan Bowl 2020 continues



*Preliminary Round for Level VI*



*Kaitlyn Wright, Level III  
Eastview High School*

2020 Digital Japan Bowl began at noon with a preliminary round, followed by the announcement of the correct answers. During the competition, cultural demonstrations and other activities were offered such as the tea ceremony, Edamame Champ (chopstick skills competition), Japanese conversation, an origami workshop, pre-recorded calligraphy workshop, and

an onigiri workshop. At 6pm the broadcast on YouTube began with a video message from Princess Takamado. Then the finalists were announced. Unfortunately, our MN teams were not called for the final rounds; however, we look forward to hearing about their experiences and results.

After two hours of exciting championship rounds, the winning teams were announced. In the closing ceremony, Ambassador Mondale, Ambassador Extraordinary and Plenipotentiary of Japan to the United States of

America Sugiyama, and George Takei congratulated the winners

and gave praise and encouragement to high school students studying Japanese. We sincerely hope to be able to go to Washington D.C. next year!



*A live tea ceremony  
demonstration with Jennifer  
Swanson, an omotesenke tea  
practitioner*



*A question between programs*

... continues on page 5



## Thank You, National Japan Bowl Sponsors!

*JASM extends our heartfelt gratitude to the J-Quiz/ Japan Bowl sponsors for their support to make the participation in the National Japan Bowl possible.*



**Daikin Applied**

**Dorsey & Whitney, LLP**

**Hamre, Schumann, Mueller & Larson, PC**

**The Japan Foundation— Los Angeles**

**Kiku Enterprises, Inc.**

**Ron Leonhardt**

**LocalizationGuy**

**The Ken Port Scholarship**

**Taiyo International, Inc.**

**Temple University, Japan Campus**

**Saji Ya Restaurant**

**Hiroko and John Shade**

**Seiichi Suda**

*Thank you for your dedication.*

## Upcoming: New Member Social 2020

Every year JASM holds a New Member Social so that we may better get to know each one of our new members. We invite JASM new members to join us for a Zoom meeting this year, as we do for other events due to COVID-19.

The New Member Social will run from 6:00 pm to 7:30 pm on Tuesday, June 23.

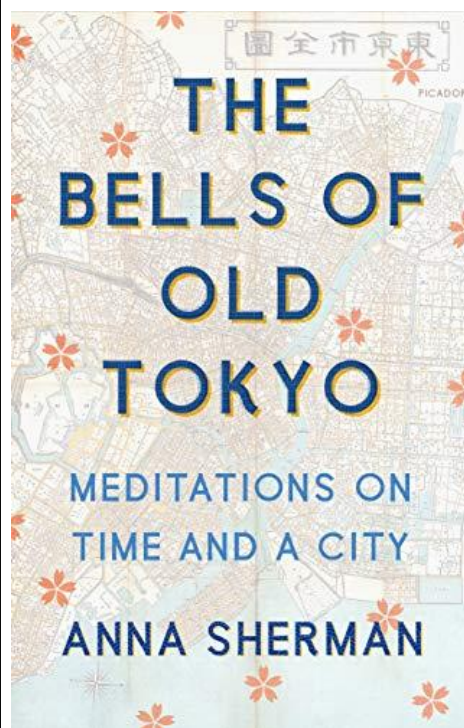
We encourage everyone to join if you would like to get to know JASM a little bit better and get to know other Japan enthusiasts, too. If you are a JASM member and interested in participating, please email [jasm@us-japan.org](mailto:jasm@us-japan.org) to receive the specific Zoom meeting information.

We are looking forward to meeting you in person -- online!



*Attendees at New Member Social 2019*

## Tom Haeg's Book Review



*The Bells of Old Tokyo: Meditations on Time and a City;* Anna Sherman, Picador Press, 2019, 377 pages, \$28.

In Japan, way before slick Seiko or chic Casio watches, there was a Zodiac clock. Time was cyclical, ensconced in a sequence of 12 animals beginning with the Rat from 11 p.m. to 1 a.m. and ending with the Boar at 9 p.m. The feudal populace kept time by listening to the ringing of bells in shrines and temples. Life was

simpler then. The Meiji Restoration in 1872, in an abrupt effort to catch up with the West, forever abolished and replaced these time-telling bells with Western time-keeping pieces and calendars.

*Bells* is both a nostalgic and an academic travelogue down memory lane in search of these old bells as quarry. Sherman's journey is slightly foiled since many of the bells either no longer exist (some were melted for the WWII war effort) while others were not even found on her map. No problem. The story tacks by going neighborhood to neighborhood to ferret out a group narrative declaring either what went wrong or what went right in the zeal to modernize. Our author is like a peripatetic Chaucer on his way to Canterbury while along the way we are introduced to writers, artists, historians, curates, a physicist (with an atomic lattice clock that will not miss a second in five billion years) and more during this wistful sojourn. Their observations become yarns enabling the past to become prologue to the present. Meanwhile, she heightens our amusement with kind apologies to two modern (albeit tacky) institutions: the off-color love hotel and the off-beat coffee house, both Japanese examples of just "passing time" to connect the dots to the good old Tokugawa Shogun days.

One should not mistake *Bells*' casual *leitmotif*: it is no ordinary bookstand guidebook. It is well-researched, accurate, and quite reliable to render a literary accounting between the old (when there were bells) versus the new (*sans* bells). With 225 pages of text and more than 150 pages of endnotes, Sherman's avowals are well supported.

So, if you have not been to Tokyo, *Bells* will help show you where to go; and, if you already have been there, well, it will tell you what you missed. Just be sure to take your time. *Isoganaide.*

*Tom Haeg*

## A Word from Nihonjinkai

Dear Minnesota Japanese friends,

In response to the Governor's continued request, we will be unable to meet for our monthly meeting or open up the Japanese Library to the public at this time. Governor Walz is asking vulnerable Minnesotans to continue to stay at home and social-distance to protect themselves from the coronavirus. That includes those at risk for severe illness, such as the elderly, or individuals with underlying health conditions. And large gatherings of more than 10 people are still not permitted. Violations of this order are considered a misdemeanor and are punishable by fine.

Even if we were to limit our gatherings to fewer than 10 guests, the configuration of the Japanese Library is such that we cannot physically social-distance 6 feet or more apart from one another (or even with 3-5 guests)! We are disheartened that we cannot meet in person yet, but look forward to the day when we can celebrate with good food and lively conversation face to face once again!

Along these same lines, it is highly doubtful we will be able to have our annual garage sale at the end of June or even in the fall. We will keep you posted, but for now we ask you to hold your large donation items and bags/boxes of clothing donations at home until we know more details. We appreciate your understanding.



*Miyoko Suematsu Miller (left) and Mitsue Shido*

We learned that Miyoko Suematsu Miller passed away on April 17th at the age of 91. She was a dear friend to some of our members and we offer our condolences to Miyoko-san's family & friends. May she rest in peace.

Don't forget to join our Facebook group:  
<https://www.facebook.com/groups/1644814705588014/>



Photo by  
Ackerman + Gruber

**Yoko Breckenridge**  
**612-839-0008**



## JASM Members, please check out our updated website!



As you may have noticed JASM has a new membership system and a redesigned website! If you are a JASM member, please log in to your account on the website, or register if you do not have an account yet. Now it is more convenient to sign up for events, receive receipts, renew your membership, and more.

Here are instructions on how to access and log in to the improved website:

1. Go to the JASM web site: <http://www.mn-japan.org>
2. Click on <Log in> on the upper right of the screen.
3. Type in your email address in the email box and click <Forgot password>  
(Please use the same email address you use for JASM membership.)
4. Check your email inbox. You should see a link that allows you to reset or create your password.  
Click the link, reset your password, and then log in.  
Now you should see your name in the upper right-hand corner.
5. Click on your name, and you will see a menu that allows you to log out, change your password again, or view your profile. Click on <View profile> and you will be able to review and edit your information.

If you need more detailed instructions, please click [here](#) or send us an email: [jasm@us-japan.org](mailto:jasm@us-japan.org).

## Membership News

Thanks to the following new JASM members:

Elizabeth Simmer

Thanks to the following renewing JASM members:

Michael Akin, Carol Anderson, Deanna Bassett,  
Susan Blehert, Micah and Chiemi Bly,  
Hanna Brandt, Cornelius Imai,  
Gretchen Dempewolf and David Toplon,  
Daniel Dulas and Cheryl Hirata-Dulas, Jennifer Erickson,  
Keiko Foss, Riley Hanson, Asako Hirabayashi,  
Jack Koepke, Christopher Mincks, Henry Russell,  
Marcia Sanoden, David Schultz, Lisa Shakerin,  
Kenichi Tazawa, Helen Truax,  
Ben and Christine van Lierop, Michelle Watanabe,  
Matthew and Michelle Welch, Jon Wilbrecht,  
Colin and Nell Wirth, Akiyoshi Yonehara,  
Kashi Yoshikawa

Thanks to the following renewing  
Corporate members:

JK's Table

University of Minnesota, Department of Asian and Middle  
Eastern Studies (AMES)  
Minneapolis Institute of Art  
Tomodachi



## Japanese Conversation Clubs



**The Japanese Speaking Club** is an informal meeting place for those wishing to practice Japanese. We encourage those just beginning the language as well as native speakers to gather at **Corner Coffee** in Uptown Minneapolis to meet new people, discuss experiences in Japan, or simply to speak Japanese. Activities are now suspended until local nonessential businesses reopen.

**Date/Time: ONCE CORNER COFFEE REOPENS,** Every Saturday at 3:00 p.m. (however, most people do not show up until at least 3:30.)

**Place:** Corner Coffee  
1414 W 28th St, Minneapolis, MN 55408 (Just east of Hennepin Avenue South)

Check out another conversation group: **Twin Cities Japanese Conversation Meetup Group** (<https://www.twincitiesjapaneseconversation.com/>)

*Note: This is a private group. In order to join, a questionnaire must be completed at the web site linked above.*

The goal of Twin Cities Japanese Conversation Meetup is language fluency in either Japanese or English. This group is for Japanese language learners who want to improve their Japanese speaking skills or/and native Japanese speakers who want to improve their English speaking. Those who just want to help out are also welcome.

Parts to the meetup: 自己紹介 (self-introductions), 質疑応答 (questions and answers about language) and 会話練習 (conversation practice).

**Meetings:** Edina (Monday), Minnetonka (Thursday), Saint Paul (Saturday).

**Since March 16 the group is holding all meetings online.**

For any question about this group, please email Mariquita Anderson: [mariquita@twincitiesjapaneseconversation.com](mailto:mariquita@twincitiesjapaneseconversation.com)

### Calendar: June 2020

Hula with Kumu Kanani Atsuko Johnson— Hawaiian Music in Japanese, 2nd session, **June 11**

Curator Talk for Mia Exhibition 'Yoshitoshi', **June 17**

New Member Social, **June 23**

### New Intern: Megumi Yokomizo



*Megumi Yokomizo*

Hello! My name is Megumi Yokomizo, the new Event Coordinator for JASM.

I'm a transferred student from Fukuoka in Japan, studying Agricultural Business and Animal Science at the University of Wisconsin-River Falls. I would like to contribute to the further development of agriculture in Japan after graduation. I love to travel around the world and learn new languages. Also, I love animals.

I'm excited to work as an intern at JASM. Thank you.

### Become a JASM Member online

*Support our mission and become a member!*

1. Go to [mn-japan.org](http://mn-japan.org)
  2. At the top, hover over 'Support' then click on 'Join'
  3. Select your membership type and read the benefits and instructions.
- You can also become a member using your smartphone.

### Japan America Society of Minnesota

- ☐ Membership Application   ☐ Change of Address
- ☐ Tax-deductible Donation

Name \_\_\_\_\_

Name (2nd adult of a household membership) \_\_\_\_\_

Address \_\_\_\_\_

City \_\_\_\_\_

State \_\_\_\_\_

ZIP \_\_\_\_\_

E-mail \_\_\_\_\_

Phone \_\_\_\_\_

I would like to make an additional tax-deductible donation of \_\_\_\_\_

Amount Enclosed: \_\_\_\_\_  
(Please make checks payable to JASM)

#### Individual Membership

Patron.....	\$1,000+
Sustaining.....	\$500+
Contributing.....	\$100+
Individual .....	\$30
Student .....	\$20
Household .....	\$50
(2 adults plus children under 18)	

Japan America Society of Minnesota  
43 Main Street SE Suite EH—131, Minneapolis, MN 55414

# Japan America Society of Minnesota



Riverplace EH-131  
43 Main Street SE  
Minneapolis, MN 55414-1031

Tel: 612-627-9357  
Fax: 612-379-2393  
jasm@us-japan.org  
www.mn-japan.org

## 通信

Tsūshin  
June 2020

The Japan America Society of Minnesota is a non-profit, non-political association engaged in bringing the peoples of Japan and the United States closer together in mutual understanding, respect, and cooperation. Through programs and interchange, it endeavors to promote an appreciation of cultural, educational, economic, public, and other affairs of interest to both peoples. Membership in the society is open to individuals, corporations, and other organizations interested in furthering its programs.

The Japan America Society of Minnesota is a member of the National Association of Japan-America Societies.

(Please report any inaccuracies you find in this publication to [jasm.interns@gmail.com](mailto:jasm.interns@gmail.com))

## 2020 Digital Japan Bowl



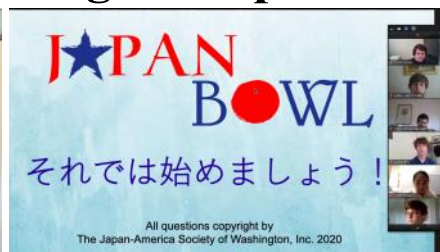
*Demonstration of "how to make Okonomiyaki" by Nancy Marsden, Director of Japan Bowl*



*Tea ceremony demonstration in the cultural session*



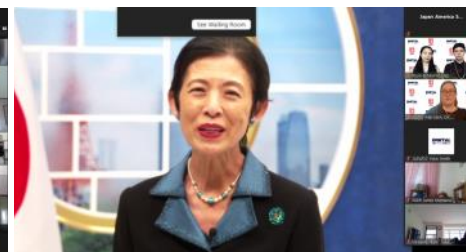
*Mr. George Takei at the closing ceremony*



*2020 Digital Japan Bowl*



*Ambassador Mondale at the closing ceremony*



*Princess Takamado at the opening ceremony of the championship round*



*Joseph M. Young, Charge d'Affaires ad interim, U.S. Embassy Tokyo*



*The Students of level III competing for the championship*



*Ambassador Extraordinary and Plenipotentiary of Japan to the United States of America  
Shunsuke Sugiyama*



*Ryo Nakayama sharing his experience as J-Leap Assistant Teacher at Harding High School in St. Paul, MN*