

Japan America Society of Minnesota



通 信

The Tsūshin is a membership publication of the Japan America Society of Minnesota

June 2021 Vol. 30, No. 7

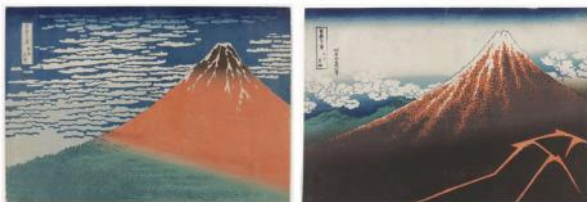
Recap: Curator Talk for Exhibition Tour in Japan: Masterpieces from the Japanese Painting Collection



Dr. Andreas Marks

On Thursday, May 20th, JASM held a curator talk about the Minneapolis Institute of Art's (Mia) exhibit of masterpieces from their Japanese painting collection, currently touring Japan. This talk was presented by the head curator for the exhibit, Dr. Andreas Marks, who is the Mary Griggs Burke curator and head of the Japanese and Korean art department at Mia.

This tour featuring some of Mia's Japanese works, organized by the Yomiuri Shimbun, was six years in the making. It features scrolls, woodblock prints, and sliding doors, many from the Edo Period (1603-1867). This landmark exhibit will travel to four different art museums across Japan. The first and current location for the exhibit is the Suntory Museum of Art in Tokyo, which opened to more than 400 attendees at the preview. Of course, the current pandemic situation has made things difficult: Mia had to send over the art without anyone accompanying it! The exhibit will continue at Suntory until June 17th before heading to Fukushima, Shiga, and Yamaguchi, through April 2022.



(Left) "South Wind, Clear Weather," 1830-1833, Katsushika Hokusai, GIFT OF LOUIS W. HILL, JR (P.70.148); (Right) "Rainstorm beneath the Summit," 1830-1833, Katsushika Hokusai, BEQUEST OF RICHARD P. GALE, (74.1.227)

Dr. Marks was glad to share a couple of promotional videos with us, both of which were very high in quality, showing even more how much work went into presenting these masterpieces from Mia. After discussing the art at length, from Hokusai prints to the sliding door paintings of Kanō Sanraku, Dr. Marks presented the complicated layouts needed for setup, stating that "setting up the walkthrough is like telling a story." The talk ended with Q&A, which focused mainly on transporting delicate works of art.

Mia is a JASM corporate member and we are, of course, always grateful for their wonderful support. We wish Dr. Marks and everyone at Mia the best of luck with the continuing exhibition tour.

Upcoming: Edamame Champ 全米エダマメ選手権

Learn about healthy eating through Japanese food!

>Chopstick competition
>Miso ramen cooking demonstration

Saturday, June 5th at 5pm EDT / 4pm CDT

#EDAMAMECHAMP is an annual spring campaign to promote healthy eating through Japanese cuisine, focusing on soy. It also raises funds for teaching healthy eating to more children. We are joining our friends at *Table for Two* and *Japan America Society of Boston* for #EdamameChamp on **Saturday, June 5 at 4 p.m. (CDT)**. Join us to learn about healthy Japanese cuisine and enjoy some fun challenges using edamame!

This is a free event. Part of the donation to this event will be presented to Table for Two.

- *Event Part 1: Presentation about Soy*
 - *Event Part 2: Edamame Chopstick Competition**
 - *Event Part 3: Cooking Class Using Soy (Miso Ramen)*
- You will receive the ingredient list for Miso Ramen before the event.

The more participants at this event, the more support Table for Two will receive from the partner organizations! Please join us and invite your friends and families.

**This is a virtual event to challenge your chopsticks skills. Please prepare two plates, chopsticks, and a couple of edamame pods. If you don't have edamame, you can use any kind of beans.*

This is a free event. [Register Today!](#)



Message from Executive Director Rio Saito



Rio Saito
JASM Executive Director

Time has really flown by and now we already are halfway through 2021. We have been spending this unique time together and JASM is grateful to still be here, building community with you. Thank you to everyone who has been joining our events and supporting us. 2021 has already been full of adventures for JASM. For the first time, with the wonderful help of a committee and high school and college Japanese language teachers, we held

J-Quiz online. We were not able to have our annual Shinnenkai/New Year's celebration, but we put together an online Shinshunkai in spring. And we are still having two online events per month. If there is a topic you are interested to learn or hear about, please let us know.

It is still difficult to think about the passing of Ambassador Mondale. We lost a great leader and friend of our community. Every time I was with Mr. Mondale, I felt like I was a bodyguard because he was such a popular person. It was difficult to move from one place from another without being surrounded by people who wished to greet him. He was so nice that he spent time with many of them. Mr. Mondale exemplified benevolence and inspired us all to be better. JASM will continue to follow his legacy and we hope that he is smiling upon us.

The year 2022 will be the 50th anniversary of Japan America Society of Minnesota. We have begun planning a yearlong celebration. We are so grateful for people who came before us and built this community. We would like to look back and learn about the leaders and efforts made, to respect and appreciate the history of JASM. At the same time, we are excited to look ahead and see what JASM can become over the next 50 years. Since I have been with JASM for just four years now, I would love to hear from people who have stories from back in the day. Please feel free to share your stories with us.

Our environment has been changing drastically, especially this past year or so. JASM has also been evolving and growing.

There is a Japanese saying (from China, I'm sure): 温故知新. *By studying the past, we can discover new things.* In order for us to fully enjoy our 50th anniversary and grow from learning our history, there is a lot of work to do. But we're planning on a big comeback; we can't wait to see you all in person to celebrate.

Thank you to all of our members for your support. We are here because of you. Please continue to join our events and share the experience with your friends and family even if they are outside Minnesota; that is the great advantage of having online events.

Rio Saito, JASM Executive Director

Upcoming: Know Me Kai: Welcoming New JASM Members

Welcome, new JASM Members.
We miss you, long term members.
Please join our *Know Me Kai!*



New Member Social 2020

Please join us for an online **Know Me Kai** event to welcome new JASM members on **Thursday, June 10 from 6:00 pm to 7:30 pm.**

JASM will give away masks to the first 45 registrants of this event! They are the winning design of the *Mask Up 2020, U.S.-Japan Face Mask Design Contest* launched by the Japan Foundation for Global Partnership. **Register today and get a mask!** The mask can be picked up or mailed to you.

We encourage everyone to attend with your favorite refreshments at hand. This event will help you get to know JASM a little bit better and become acquainted with other Japan enthusiasts in Minnesota and surrounds. Know Me Kai is a play on the Japanese expression *nomikai*, the name of informal social gatherings which often involve drinking.

This is a JASM member-only event. Please register [here](#). We are looking forward to meeting you online!

Membership News (4/21-5/20, 2021)

Thanks to the following new JASM members:

Yoshiki Funasaka, Manuel Kaplan, Jacob Novak

Thanks to the following renewing JASM members:

Chris Armacost, Micah and Chiemi Bly,
Hanna Brandt, Joe Cassell, Jeanette Cureton,
Gretchen Dempewolf, Keiko Doi,
Daniel Dulas and Cheryl Hirata-Dulas,
Jack Koepke, Kailey Kraus, Linda Marek, David Schulz,
William and Lee Strang, Kenichi Tazawa, David Toplon,
Helen Traux, Nell and Colin Wirth

Thanks to the following renewing Corporate members:

UMN Department of Asian and Middle Eastern
Studies

Saint Paul–Nagasaki Sister City Committee

Concordia Language Villages

Sawai Pharmaceutical Co., Ltd

Mondale Scholarship 2021-2022 Suspended

The Mondale Scholarship Committee has decided to suspend the Mondale Scholarship for 2021–22 due to the COVID-19 pandemic. It has been very difficult to travel to Japan because of the pandemic-related restrictions, therefore we expect that the number of students being able to study in Japan this or the following year will be very low.

We are sorry for the students who planned to study in Japan 2021–22. We will be watching the development of the travel situation and we hope to be able to support students in 2022–23.



Easy Way to Give to JASM! by Sanae Tomita

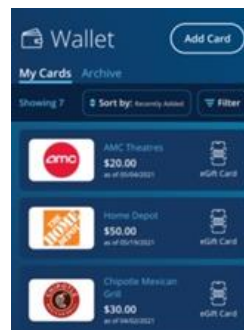
JASM is the hub of our community. Even when we were stuck at home last year, JASM kept bringing us back together with fun activities and lectures online. Each of us supports JASM in one way or another, but did you know you can give back just by buying gift cards for your regular shopping through [ShopWithScrip](#) with no extra cost to you?



Since I read about this gift card fundraising in Tsushin, I've been an avid user of the [RaiseRight](#) mobile app. All I do is buy gift cards on my phone before making purchases necessary for everyday life. Every time I buy a gift card, a small portion of it goes to JASM. There are tons of stores and restaurants participating in this fundraising, so it should be easy for anyone to find their favorite shops.

When I buy groceries at Cub, I swipe the gift card I got through RaiseRight. The balance is updated on the app and I can reload the card anytime with my phone. When I shop at Home Depot, I pay with an e-gift card at checkout. I also bought an AMC e-gift card before buying tickets for the Demon Slayer movie online! E-gift cards are convenient because they are delivered directly to your phone about a few minutes after you purchase them.

For some stores, you can only buy physical gift cards. When I order physical gift cards for Holiday gas stations, I buy them with other JASM friends and let them to be sent to JASM to save the postal fee. You can meet up with JASM staff to receive them. It is also possible to send the cards directly to you if you cover the mailing cost.



The everyday way to make an impact every day

Join us in raising money for our organization simply by using gift cards where you're already shopping. It's easy, rewarding, and fits perfectly into your busy life.

A family can earn over \$1,000 per year

Shop and earn with over 750 top brands

- Gas
- Grocery
- Clothing
- Shoe
- Entertainment
- Home Improvement
- Travel
- Retail

See all available brands at [ShopWithScrip.com](#)

How it works

- Buy physical gift cards, eGift cards, and reloadable gift cards at face value on [ShopWithScrip.com](#) or the mobile website, [MyScripWallet.com](#).
- Easily pay online and earn a rebate between 2% and 16% that immediately goes toward funding for our organization.
- Use your gift cards for your everyday shopping.

Start earning today

- Join our program by creating an account on [MyScripWallet.com](#) or [ShopWithScrip.com](#).
- Enter our organization's enrollment code: CE71597962517
- Link your bank account to enroll in online payments and place your first order.

Have a question? Contact our coordinator at: 812-827-9357

Now that we are moving into the post-COVID world, how about adding RaiseRight to your new normal so you can support JASM with your everyday shopping? If you're having a family trip or a DIY project this summer, you could potentially raise a lot of money for JASM. Remember you're not just doing something good for JASM. You're doing it for yourself because JASM is there to support us and empower our Japanese community.

See more details including the code for JASM in [this flyer](#).

Sanae Tomita

Please email jasm@us-japan.org if you have any questions regarding the ShopWithScrip.

Please thank our members with your support!

Corporate Benefactor Members

Anime Twin Cities, Inc.
Daikin Applied
Delta Air Lines, Inc.
MTS Systems Corporation
Sawai Pharmaceutical Co., Ltd.
Taiyo International

Patron Members

Dorsey & Whitney LLP

Corporate Sustaining Members

Arctos Law PLLP
Deloitte Tax, LLP
Hamre, Schumann, Mueller & Larson, PC
Japan Lifeline Co. Ltd.
Mall of America
Medtronic, Inc.
Metropolitan Airports Commission
MGK, Inc.
Minnesota Council of Teachers of Japanese
Naigai Industries U.S.A. Inc.
The Bank of Tokyo-Mitsubishi UFJ, Ltd.

Corporate Contributing Members

Briggs and Morgan, P.A.
IACE Travel
Murata Vios Inc.
Satellite Industries, Inc.
Surdyk's Liquor & Cheese Shop
UMEI

Partners in Service

JK's Table
Kiku Enterprises, Inc.
Minnesota Trade Office
Origami Restaurant
Sakura Restaurant
Saint Paul Saints Baseball Club
Saji-Ya Restaurant
Suishin Restaurant
Tomodachi
Zen Healing Center

Nonprofit Members

Concordia Language Villages
Economic Club of Minnesota
Global Minnesota
JETAA Minnesota
JETRO Chicago
JP Network, St. Cloud State University
KCC-Japan Education Exchange
Macalester College Asian Language & Culture Department
Minneapolis Japanese School
Minneapolis Institute of Art
Minnesota Orchestra
Mu Performing Arts
NDSU-Emily Reynolds Historic Costume Collection
Twin Cities Aikido Center
UMN Department of Asian and Middle Eastern Studies
University of North Dakota-Grand Forks
Winona State University Global Studies Dept.



臨時領事事務所開設のお知らせ(6月分)

新型コロナウイルス感染に伴い、当館管轄10州のうち、イリノイ州を除く他州にお住まいの方が当館にお越しいただくことが実質的に困難になる中、当館ではこれらの州にお住まいの皆さまを対象に領事サービスの提供を継続するため、以下のとおり臨時事務所を開設します。

新型コロナウイルス感染拡大防止の観点から、臨時領事事務所は完全予約制になりますので、利用をご希望の方は必ず事前に電話でご予約をお願いします。

新型コロナウイルス感染拡大防止の観点から、臨時領事事務所は完全予約制になりますので、利用をご希望の方は必ず事前に電話でご予約をお願いします。

なお、新旅券受領の方につきましては、旅券仮申請書類が当館到着後にご予約願います。当日のご予約のない場合、上記の観点等から、入場をお断りすることがあります。

また、ご来場の際にはマスク着用をお願いするとともに、使用する筆記具について、可能な限りご自身の筆記具(黒色ボールペン)をご持参いただきますようお願いいたします。

領事臨時事務所の開設につきまして、7月以降も継続する場合には、その予定が決まり次第お知らせいたします。

【予約方法】

当館開館日の受付時間内に下記の電話番号宛に電話で予約をお願いします。

電話番号:312(280)0400

【注意】

旅券等の申請書類等を郵送申請する場合は、着実な事務処理の観点から、下記の「申請書類等を郵送する場合の当館必着日」までに届くよう時間に余裕を持って申請をお願いいたします。

【開設日】

2021年6月24日(木)(申請書類等を郵送する場合の当館必着日:6月10日(木))

【開設時間】

10時30分から12時15分及び
13時15分から15時まで

【会場】

Double Tree by Hilton Hotel Chicago Oak Brook
1909 Spring Road Oak Brook, IL 60523
TEL:630(472)6000

【当館連絡先】

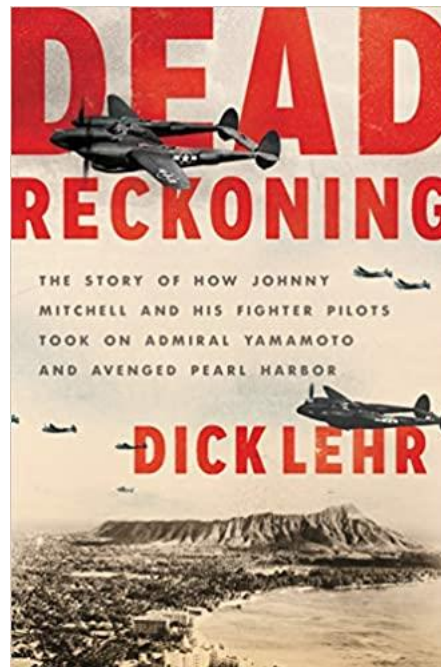
Tel:(312)280-0400(24時間対応)(注)

Fax:(312) 280-9568

Email:ryojil@cg.mofa.go.jp

(注) コロナウイルス感染症予防のため、現在業務体制を縮小しております。平日午前9時15分から午後5時までは音声案内に従って操作しますと担当部門につながります。土曜・日曜・祝祭日、平日午後5時以降、翌日午前9時15分まで(事件、事故、その他緊急の用件)は、音声に従って操作しますと、閉館時の緊急電話受付につながります。

Tom Haeg's Book Review



Dead Reckoning; Dick Lehr, Harper Press, 2021; 399 pages

Dick Lehr tells a mesmerizing cat and mouse, David vs. Goliath, hunter vs. hunted story about code name "Operation Vengeance". Set in the Pacific Theatre during World War II, it is a narrative detailing the targeted killing of Japanese Imperial Navy Admiral Isoroku Yamamoto (the hunted) by Colonel Johnny Mitchell of the United States Army Air Corps (the hunter).

While there is a plethora of books on the subject, *Dead Reckoning* is distinguished. I initially assumed it was written by a military historian or West Point academic. Wrong and wrong. Mr. Lehr was a newspaper reporter for 30 years and currently is a journalism professor at Boston University. Intrigued, I called him on the phone. Amazed, he answered. Astonished, here's what I discovered. He went beyond the normal academic archival library research to go right to the source: shoe boxes.

Yup, dusty, old, reused shoe boxes. He walked right into the homes of the descendants of Colonel Mitchell in their Chicago homes to discover reposed shoe boxes chock full of pictures and letters revealing the humanity of the combatants and the context of the action. Said in another way: Mr. Lehr had his hand on the pulse writing *Dead Reckoning*.

So, what did I learn? Johnny Mitchell, a fighter pilot hero of the Guadalcanal campaign, was a self-effacing man who deferred glory and notoriety to his wingmates. Admiral Yamamoto, architect of the attack on Pearl Harbor, was a cultured Harvard student with pro-Western ideals. Yet the real heroes were the U.S. Navy code-breaking cryptographers at Station Hypo in Hawaii who in anonymity successfully spied on Japanese communications to target Yamamoto.

Did the killing of Yamamoto end the War? Probably, not. Did it abbreviate it? Clearly, yes. Did it save lives? Absolutely.

-Tom Haeg

ミネソタ州のヘイトクライム相談・対応窓口 (シカゴ総領事館便りより)

当館がミネソタ州治安当局から提供を受けたヘイトクライム相談・対応窓口をお知らせします。

連絡先 Minnesota State Patrol
電話：651-201-7100
Emergency on-call Major 651-201-7151

なお、上記は人命にかかわる緊急事態に対応する窓口ではありません。人命にかかわる危険が生じている場合などの緊急時には、911にご連絡ください。

【当館連絡先】
Tel: (312) 280-0400 (24 時間対応) (注)
Fax: (312) 280-9568
Email: ryoji1@cg.mofa.go.jp

(注) コロナウイルス感染症予防のため、現在業務体制を縮小しております。平日午前9時15分から午後5時までは音声案内に従って操作しますと担当部門につながります。土曜・日曜・祝祭日、平日午後5時以降、翌日午前9時15分まで(事件、事故、その他緊急の用件)は、音声に従って操作しますと、閉館時の緊急電話受付につながります。

Japan America Society of Minnesota

- Membership Application ○ Change of Address
- Membership Renewal ○ Tax-deductible Donation

Name _____

Name (2nd adult of a household membership) _____

Address _____

City _____

State _____

ZIP _____

E-mail _____

Phone _____

I would like to make an additional tax-deductible donation of _____

Amount Enclosed: _____
(Please make checks payable to JASM)

Japan America Society of Minnesota
P.O. Box 26639, Minneapolis, MN 55426

Individual Membership

Patron.....	\$1,000+
Sustaining.....	\$500+
Contributing.....	\$100+
Individual	\$30
Student	\$20
Household	\$50
(2 adults plus children under 18)	

Calendar

June

Edamame Champ, **June 5 at 4 pm**
Online Know Me Kai: Welcome New JASM Member,
June 10 at 6 pm

Become a JASM Member online

Support our mission and become a member!

1. Go to mn-japan.org
 2. At the top, hover over 'Support' then click on 'Join'
 3. Select your membership type and read the benefits and instructions.
- You can also become a member using your smartphone.

Japanese Conversation Clubs



The Japanese Speaking Club is an informal meeting for those wishing to practice Japanese. We encourage those just beginning the language as well as native speakers to participate to meet new people, discuss experiences in Japan, or simply to speak Japanese.

This group currently meets regularly over Zoom. For more details, send an email to group coordinator Will Etkin: will.etkin@atgmail.com

Check out another conversation group: **Twin Cities Japanese Conversation Meetup Group** (<https://www.twincitiesjapaneseconversation.com/>)

Note: This is a private group. In order to join, a questionnaire must be completed at the web site linked above.

The goal of Twin Cities Japanese Conversation Meetup is language fluency in either Japanese or English. This group is for Japanese language learners who want to improve their Japanese speaking skills or/and native Japanese speakers who want to improve their English speaking. Those who just want to help out are also welcome.

Parts to the meetup: 自己紹介 (self-introductions), 質疑応答 (questions and answers about language) and 会話練習 (conversation practice).

Meetings: Edina (Monday), Minnetonka (Thursday), Saint Paul (Saturday).

Since March 16, 2020 the group is holding all meetings online.

For any question about this group, please email Mariquita Anderson: mariquita@twincitiesjapaneseconversation.com



J | A | S | M

JAPAN AMERICA SOCIETY
of MINNESOTA

P.O. Box 26639
Minneapolis, MN 55426

jasm@us-japan.org
www.mn-japan.org

通信

Tsūshin
June 2021

The Japan America Society of Minnesota is a non-profit, non-political association engaged in bringing the peoples of Japan and the United States closer together in mutual understanding, respect, and cooperation. Through programs and interchange, it endeavors to promote an appreciation of cultural, educational, economic, public, and other affairs of interest to both peoples. Membership in the society is open to individuals, corporations, and other organizations interested in furthering its programs.

The Japan America Society of Minnesota is a member of the National Association of Japan-America Societies.

Please report any inaccuracies you find in this publication to jasm@us-japan.com

JASM May Events



“Crane and Waves,” 1760s, Soga Shōhaku, GIFT OF ELIZABETH AND WILLARD CLARK
(2013.30.14.1-.2), Minneapolis Institute of Art



Masterpieces from the Japanese Painting Collection of the Minneapolis Institute of Art
ミネアポリス美術館 日本絵画の名品

1. Suntory Museum of Art, Tokyo
April 14 - June 27, 2021
2. Fukushima Prefectural Museum of Art
July 8 - September 5, 2021
3. MIHO MUSEUM
September 18 - December 12, 2021
4. Yamaguchi Prefectural Art Museum
March 1 - April 24, 2022

